



# BRANDA

**ORDER TOLL FREE**  
**1-800-458-3477**  
**www.COBRANDA.com**

## MAGNUM 500 WHEELS

14x7" & 15x7" sizes



Manufactured in the USA by Specialty Wheels Ltd. Exact reproductions of Ford's Magnum 500 wheel, show quality chromed rims.

Set of 4 wheels.....\$674.95  
 Center caps.....\$21.95 ea  
 Lug nuts.....\$1.75 ea

**SPECIAL THIS MONTH! BUY 4 MAGNUMS COMPLETE WITH CAPS & LUGS FOR ONLY.....\$734.95**



## 1969-70 SHELBY 5-SPOKE WHEELS (15x7)

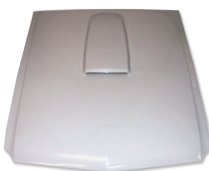
Exact repro; chromed steel rim with aluminum center. Used on 69-70 Shelby.

Single wheel with lugs and cap.....\$364.95 ea.  
 Complete Set of 4 (20 lugs & 4 caps).....\$1439.95

## 1965-66 SHELBY MUSTANG HOODS

- 1.) All fiberglass with fiberglass factory frame.....\$509.95 each
- 2.) Fiberglass with full steel frame.....\$499.95 each
- 3.) Vacuum formed with full steel frame.....\$594.95 each

ALL HOODS SHIP VIA TRUCK FREIGHT



### 1965-66 Light Tension Hood Springs

Recommended with above hoods. Original on Shelsbys.

.....\$24.95 pair

### 1965-66 Shelby Mustang Hood Pins

Recommended with fiberglass hoods. Starting at \$19.95 for a complete set to \$59.95 for a concours set.

**1965-70 Shelby fiberglass, hoods, fenders, nose sections, scoops, taillight panels and trunk lids... IN STOCK & READY TO SHIP!**

## SHELBY QUARTER WINDOW KIT



Now in stock for 66 Shelsbys

Quarter window kit fits 1965-66 fastbacks. Includes everything you need to install.

.....\$274.95 kit

## 1968-70 SHELBY LETTERS



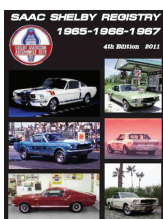
A Tony Branda Exclusive! New exact highly chromed letters with correct style and length as original with pins. Set of 6 letters.....\$49.95 set

## BACK IN STOCK! 289 HIPO 4 BLADE FANS

289 fan. Fits 65-66  
 Part number C30Z-8600-A  
 .....\$109.95 each



## 2011 SHELBY WORLD REGISTRY



Just Arrived! New 2011 Shelby American Auto Club World Registry for 1965-66-67 Shelby cars. The Shelby club has gathered new information and dug even deeper into the production history these famous cars. There are chapters on Shelby values, how to buy a Shelby, color codes, stripe dimensions, serial numbers and more! Hardcover, 1,350 pages, 1,315 bw photos and it weighs about 8lbs!

Only 2000 will be printed, get yours now!

**NOW ONLY \$199.95 EACH**

## MUSTANG & SHELBY SEAT UPHOLSTERY



1965-68 Standard Upholstery.....\$189.95 front & rear  
 .....\$129.95 fronts only

1969-70 Mach 1 / Shelby Upholstery.....\$349.95 front & rear  
 .....\$254.95 fronts only

## 1969-70 DASH PADS



1969-70 Mustang & Shelby original type black dash pads. Available with or without air conditioning. Show quality! Made by Dashes Direct and Licensed by Ford Motor Co.

Regular List \$429.95.....**SALE PRICE \$319.95**  
 (must mention this ad to get sale price)

## STANDARD DOOR PANELS



1965 thru 1968 Standard door panels (no Pony or dlx). Black and other colors. List \$55 to \$65

**NOW ONLY \$49.95 pair**

## 1965-66 MUSTANG SHELBY FASTBACK REAR SEAT DELETE

As used on all 1965 Shelsbys and Early 1966 GT350s.

### 1965 Shelby GT350 Rear Shelf

Fiberglass repro, eliminates rear seat and trap door to trunk. Mounts spare tire inside of car.

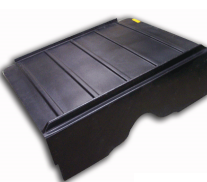
.....\$298.95



### 1966 Shelby GT350 Rear Shelf

Rare unit with ribs and lip on leading edge. Eliminates rear seat. Does not mount spare tire.

.....\$298.95



The above rear shelves ship via Truck Freight

## 1969-70 ANGLED GAUGE POD



1969-70 Mustang, angled toward the driver, looks just like the Shelby console. Simply remove the ashtray and insert the gauge pod. Just think, no more idiot lights! Holds two 2" gauges.

.....\$18.95 each

## ALUMINIZED DUAL EXHAUST SYSTEM



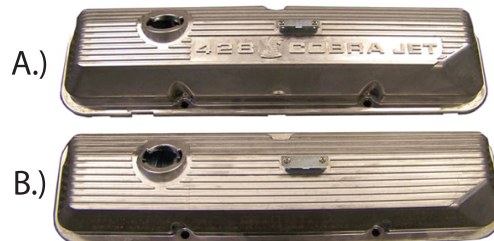
1965-66 Mustang/GT/Shelby V8 289 4 barrel and 289 HiPo; includes intermediate pipes, mufflers and resonators.  
 .....\$249.95 set  
 (Hanger kit available for \$89.95)

## 427 EAGLE CHECKERED FLAG EMBLEMS



427 Eagle checkered flag emblems, same as used on 427 Galaxy and Thunderbolt. These are cast metal, just like the originals. Mounts with 3 studs, as original. Gold with black finish. Approved by Ford. Exact finish, size and detail as originals.  
 .....\$42.95 each

## BIG BLOCK VALVE COVERS



Two styles above, fit 390-427-428 Ford FE big block engines.

**A.) 428 COBRA JET SNAKE VALVE COVERS.** Rare diecast aluminum valve covers, natural finish with fins and letters.  
 .....\$249.95 pair

**B.) 1969-70 MUSTANG BIG BLOCK VALVE COVERS.** Natural finish diecast aluminum valve cover with straight fins, originally used on 1969-70 Mustangs & 1969-70 Shelby GT-500 with 428 CJ engines.  
 .....\$209.95 pair

## "POWER BY FORD" VALVE COVERS

Mustang & Bigblock FE series chromed steel valve covers. 390-428-428CJ. Original for S & R code Mustangs. Now Available!  
**LIMITED QUANTITIES!!!**



Price per pair.....\$149.95 pr.

## COBRA ALUMINUM "T" OIL PANS

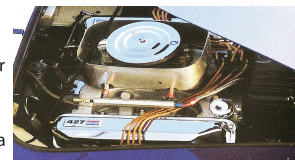
221-260-289-302 Aluminum 7.5 quart Cobra lettered T pan. Reproduction originally used on 1965-66 GT350.  
 .....\$369.95 ea



390-427-428 version, 6.5qt capacity with Cobra lettering. ....\$349.95 ea

## COBRA 427 ENGINE ACCESSORIES

427 Chrome pentroof valve covers. With or W/O breather holes.....\$149.95/pr  
 Stelling & Hellings 8-1/2" chrome air cleaner with filter.....\$71.95/ea



Aluminum cold air box "Turkey Pan" for single carb, unpolished  
 .....\$199.95 each

427 Cobra fender and valve cover emblem. ....\$21.95 each

## COBRA ALUMINUM OVAL AIR CLEANERS

Natural grey finish.....\$159.95  
 Black finish.....\$159.95

Choice of single 4v, dual quad, or 3x2v base plate. Includes filter and hardware. No-name tops available.



## FREE NEW 2010 CATALOG "Q"

Over 225 pages, Full Color, New items, Competitive prices, large inventory... Since 1975!

- FREE By Bulk Mail (2-3 weeks)
- Send \$5.00 for Priority Mail
- Send \$6.00 for Canada
- Send \$10.00 Outside of USA



**www.COBRANDA.com**

Toll Free Order Line : 1-800-458-3477 | Fax: 814-944-0801  
 Info & Tech Line : 814-942-1869

1434 E. Pleasant Valley Blvd - Altoona, PA 16602



\*Prices and availability subject to change without notice.